

Stokes

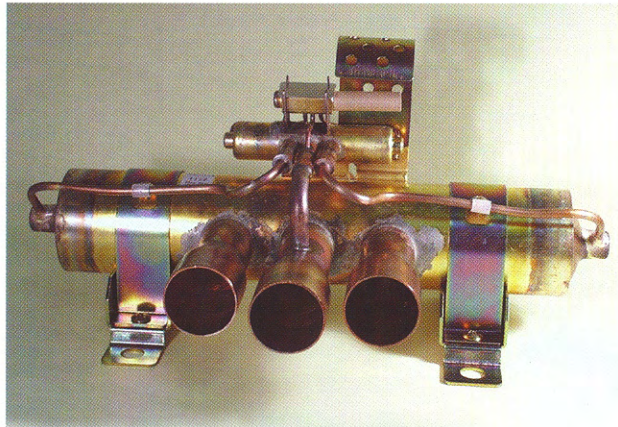
Established 1856

24 Palmerston Rd West
Ringwood, Victoria 3134
Ph 03 9872 7474
Fx 03 9872 7444
FreeCall 1800 333 191
Email parts@stokes-us.com.au



Appliance Controls

Reversing Valves



Ranco reversing valves when installed in a heat pump system reverse the flow of refrigerant through the heat exchanger to provide heating or cooling from the system and to defrost the outdoor coil in air source units. There are valves suitable for residential or commercial/industrial applications from 1 ton to 160 ton depending on refrigerant and operating conditions.

General Specifications

- 4 way pilot
- Hermetic construction
- Teflon lubricated slide surfaces
- Varying tube style on models up to 12 ton
- Suitable for R12, R134a, R22, R500, R502

The reliability you KNOW and TRUST

Ranco Reversing Valves

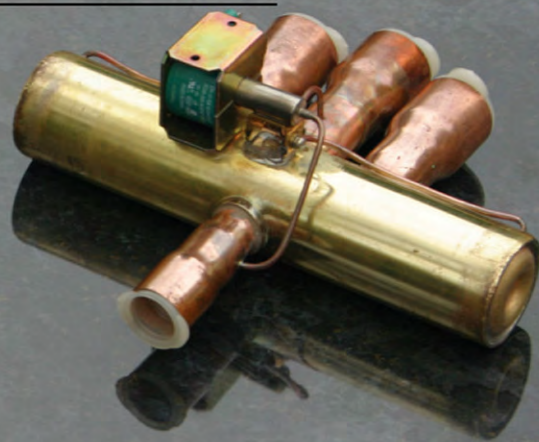
Improved Coil reliability, available in 240V and 24V

Operating Conditions and Performance

Refrigerants - known to be compatible

R12, R22, R13a, R410A, R407C, R404A, R500, R502, R507

Max. operating pressure	680 psig	4.69MPa [gage]
Min. differential pressure to reverse	15 psid	0.103 MPa
Max. differential pressure	440 psid	3.03 MPa
Max. abnormal pressure	833 psig	5.74 MPa
Min. burst pressure	2500 psig	17.2 MPa [gage]



Invensys
Controls TM

Stokes
(Australasia) Limited
Since 1856

RANCO
Temperature Controls, Pressure Controls & Domestic Controls

ABN 24 004 554 929